

MORTON'S COFFEE DRINKS



MORTON'S COFFEE

GLASSWARE

All purpose glass

INGREDIENTS

1 oz Creme de Cocoa Dark
1½ oz Bailey's
½ oz Amaretto
Coffee (to fill)
4 T Whipped Cream

BUILD INSTRUCTIONS

Rim glass with cinnamon and sugar.
Pour Dark Creme de Cocoa, Bailey's and
Amaretto into glass.
Fill with coffee.
Top with whipped cream.



IRISH COFFEE

GLASSWARE

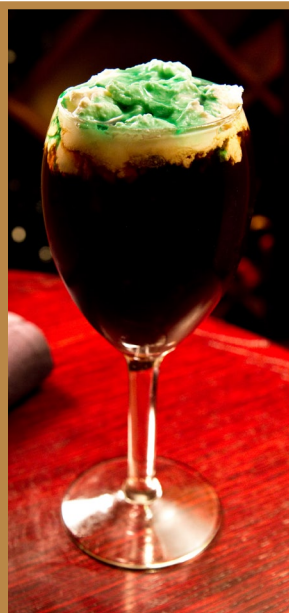
All purpose glass

INGREDIENTS

1 oz Monin Simple Syrup
1½ oz Jameson's
Coffee (to fill)
4 T Whipped Cream

BUILD INSTRUCTIONS

Pour simple syrup and Jameson's into glass.
Fill with coffee.
Top with whipped cream.



ITALIAN COFFEE

GLASSWARE

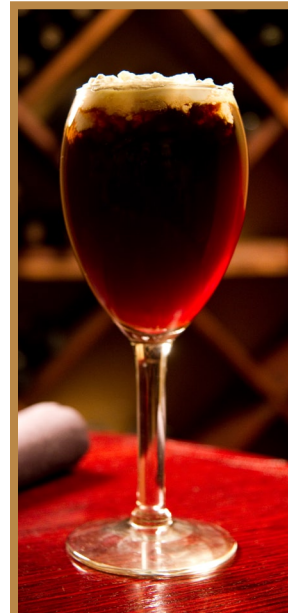
All purpose glass

INGREDIENTS

1½ oz Sambuca
Coffee (to fill)
1 T Whipped Cream
¼ oz Green Cream de Menthe

BUILD INSTRUCTIONS

Pour Sambuca into glass.
Fill with coffee.
Top with whipped cream.
Drizzle green creme de menthe on top.



SPANISH COFFEE

GLASSWARE

All purpose glass

INGREDIENTS

1 oz Korbel Brandy
1 oz Kahlua
Coffee (to fill)
1 T Whipped Cream

BUILD INSTRUCTIONS

Pour Korbel and Kahlua into glass.
Fill with coffee.
Top with whipped cream.